

Data Sheet s4u[®] SC Connector

Numerous applications

Fiber Optic Backbone, CATV and FTTH Networks, Data Centers, Network Equipment Interface

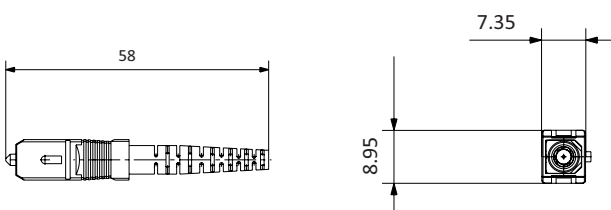
Unique features

- installer-friendly robust design with quick and reliable push-pull mechanism
- proven technology with excellent cost/performance ratio and high availability
- worldwide standard with good manufacturer compatibility
- colored housing for easy identification of product variants
- duplex clip for easy fixing of two simplex connectors



Specifications

Compliance	IEC 61754-4, TIA 604-3, RoHS
Alignment technology	2.5mm full ceramic ferrule (Zirconia ZrO ₂)
Operating temperature	-40°C to +85°C
Flammability	UL94 V-0
Durability	> 1000 mating cycles
Fiber, cable retention	IEC 61300-2-4; 100N on 2.0mm cables
Static side load	IEC 61300-2-42; 5N on 2.0mm cables
Transmission with applied tensile load	GR-326 CORE 4.4.3.5
Insertion loss, fiber core tunability	IEC 61755-3-1 / IEC 61755-3-2, Grade B
Color scheme, housing	Blue: Singlemode UPC Green: Singlemode APC 8° and APC 9° Grey: Multimode



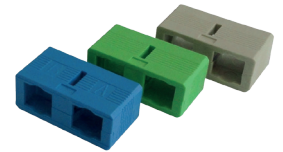
Data Sheet s4u® SC Connector

Order information

Order code	Description	Color	Packing
CO-SC-APC-SX	Fiber Optic Connector SC/SM APC Simplex	green	200
CO-SC-UPC-SX	Fiber Optic Connector SC/SM UPC Simplex	blue	200
CO-SC-OM2-SX	Fiber Optic Connector SC/MM Simplex	grey	200
CO-SC-APC-PT	Fiber Optic Connector SC/SM APC 0.9mm, green boot	green	200
CO-SC-UPC-PT	Fiber Optic Connector SC/SM UPC 0.9mm, blue boot	blue	200
CO-SC-OM2-PT	Fiber Optic Connector SC/MM OM2 0.9mm, grey boot	black	200
CO-SC-OM3-PT	Fiber Optic Connector SC/MM OM3 0.9mm, aqua boot	black	200
CO-SC-OM4-PT	Fiber Optic Connector SC/MM OM4 0.9mm, violet boot	black	200

Data Sheet s4u® SC Duplex Clip

- material LSFH, flammability UL94 V-0
- two-piece snap design
- A-B channel mark



Order information

Order Code	Description	Color	Packing
CLIP-SC-GRN-DX	SC Duplex Clip green	green	500
CLIP-SC-BLU-DX	SC Duplex Clip blue	blue	500
CLIP-SC-GRY-DX	SC Duplex Clip grey	grey	500

Data Sheet s4u® SC Boot

- material LSFH, flammability UL94 V-0
- bend limiting design



Order information

Order Code	Description	Color	Packing
BOOT-SC-GRN-20	SC Boot, 2.0mm, length 40mm	green	1000
BOOT-SC-BLU-20	SC Boot, 2.0mm, length 40mm	blue	1000
BOOT-SC-BLK-20	SC Boot, 2.0mm, length 40mm	black	1000
BOOT-SC-RED-20	SC Boot, 2.0mm, length 40mm	red	1000
BOOT-SC-GRN-30	SC Boot, 3.0mm, length 30mm	green	1000
BOOT-SC-BLU-30	SC Boot, 3.0mm, length 30mm	blue	1000
BOOT-SC-BLK-30	SC Boot, 3.0mm, length 30mm	black	1000
BOOT-SC-RED-30	SC Boot, 3.0mm, length 30mm	red	1000

Data Sheet s4u® SC Crimp Sleeve

- aluminium RoHS-compliant
- crimp dies size 4.95/3.3mm
- cable jacket fixation integrated

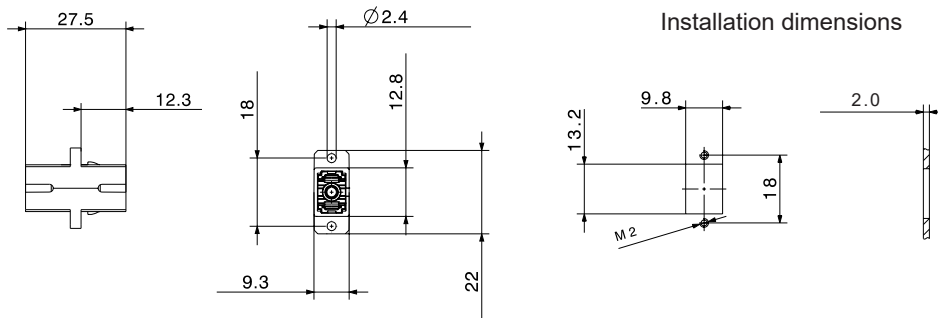


Order information

Order Code	Description	Color	Packing
CRPSL-SC-19	SC Crimp Sleeve for cables with nominal diameter 1.9 – 2.0 mm	Aluminium	2000
CRPSL-SC-28	SC Crimp Sleeve for cables with nominal diameter 2.7 – 3.0 mm	Aluminium	2000

Data Sheet s4u® SC Simplex Adapter with 2-hole flange

- 2-hole flange for screw mounting
- integrated metal latches for snap mounting
- ceramic precision alignment sleeve

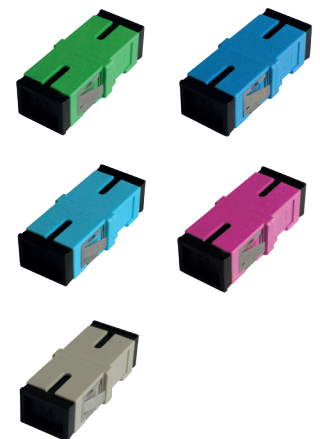
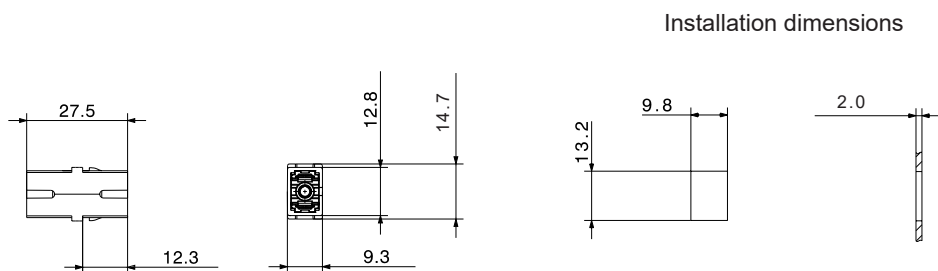


Order information

Order Code	Description	Color	Packing
AD-SC-SX-2H-GRN	Fiber Optic Adapter SC/SM APC Simplex, 2-hole flange	green	100
AD-SC-SX-2H-BLU	Fiber Optic Adapter SC/SM UPC Simplex, 2-hole flange	blue	100
AD-SC-SX-2H-GRY	Fiber Optic Adapter SC/MM OM2 Simplex, 2-hole flange	grey	100
AD-SC-SX-2H-AQU	Fiber Optic Adapter SC/MM OM3 Simplex, 2-hole flange	aqua	100
AD-SC-SX-2H-VIO	Fiber Optic Adapter SC/MM OM4 Simplex, 2-hole flange	violet	100

Data Sheet s4u® SC Simplex Adapter with short flange

- short flange for high density applications
- integrated metal latches for snap mounting
- ceramic precision alignment sleeve

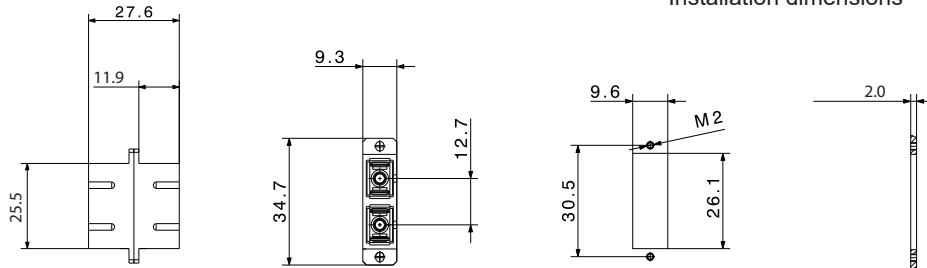


Order information

Order Code	Description	Color	Packing
AD-SC-SX-SF-GRN	Fiber Optic Adapter SC/SM APC Simplex, short flange	green	100
AD-SC-SX-SF-BLU	Fiber Optic Adapter SC/SM UPC Simplex, short flange	blue	100
AD-SC-SX-SF-GRY	Fiber Optic Adapter SC/MM OM2 Simplex, short flange	grey	100
AD-SC-SX-SF-AQU	Fiber Optic Adapter SC/MM OM3 Simplex, short flange	aqua	100
AD-SC-SX-SF-VIO	Fiber Optic Adapter SC/MM OM4 Simplex, short flange	violet	100

Data Sheet s4u® SC Duplex Adapter with 2-hole flange

- 2-hole flange for screw mounting
- integrated latches for snap mounting
- ceramic precision alignment sleeve

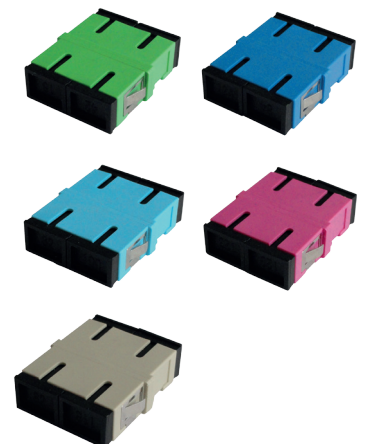
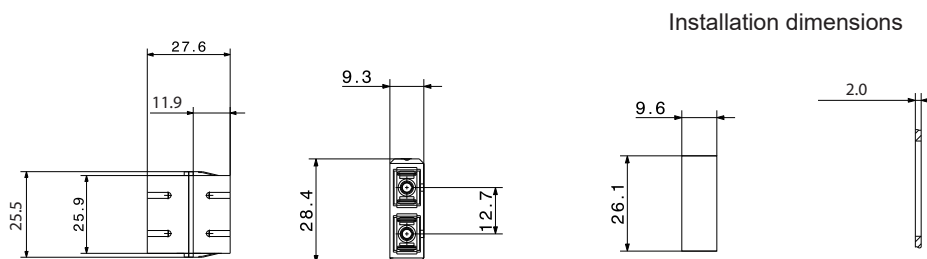


Order information

Order Code	Description	Color	Packing
AD-SC-DX-2H-GRN	Fiber Optic Adapter SC/SM APC Duplex, 2-hole flange	green	100
AD-SC-DX-2H-BLU	Fiber Optic Adapter SC/SM UPC Duplex, 2-hole flange	blue	100
AD-SC-DX-2H-GRY	Fiber Optic Adapter SC/MM OM2 Duplex, 2-hole flange	aqua	100
AD-SC-DX-2H-AQU	Fiber Optic Adapter SC/MM OM3 Duplex, 2-hole flange	aqua	100
AD-SC-DX-2H-VIO	Fiber Optic Adapter SC/MM OM4 Duplex, 2-hole flange	violet	100

Data Sheet s4u® SC Duplex Adapter with short flange

- short flange for high density applications
- integrated latches for snap mounting
- ceramic precision alignment sleeve



Order information

Order Code	Description	Color	Packing
AD-SC-DX-SF-GRN	Fiber Optic Adapter SC/SM APC Duplex, short flange	green	100
AD-SC-DX-SF-BLU	Fiber Optic Adapter SC/SM UPC Duplex, short flange	blue	100
AD-SC-DX-SF-GRY	Fiber Optic Adapter SC/MM OM2 Duplex, short flange	aqua	100
AD-SC-DX-SF-AQU	Fiber Optic Adapter SC/MM OM3 Duplex, short flange	aqua	100
AD-SC-DX-SF-VIO	Fiber Optic Adapter SC/MM OM4 Duplex, short flange	violet	100

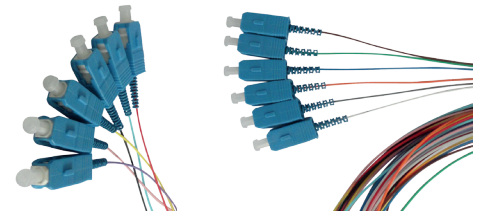
Data Sheet s4u[®] SC Pigtail

Numerous applications

BTW – Behind-The-Wall application in high-density passive optical networks

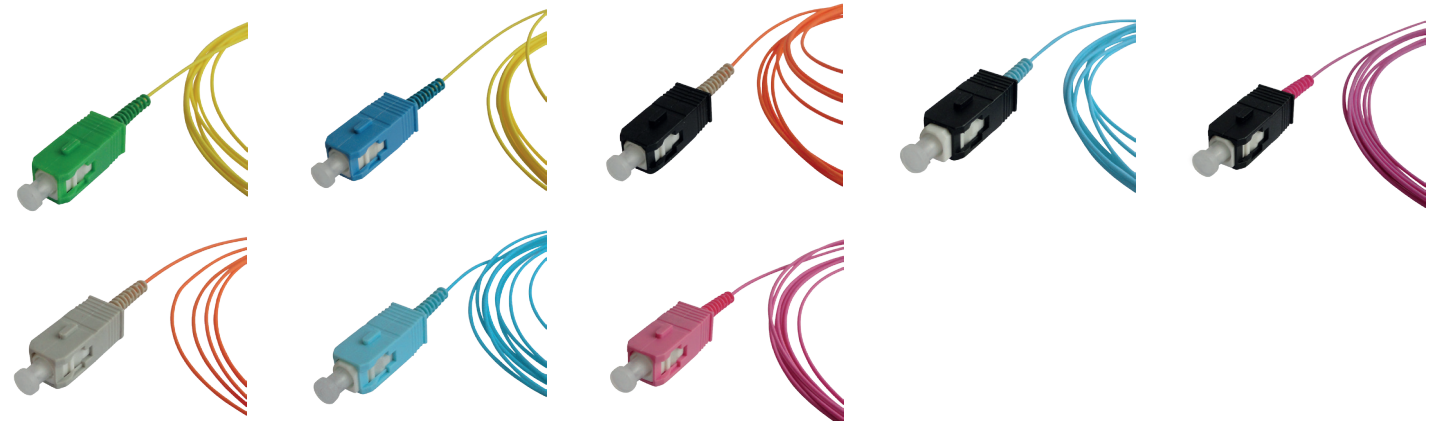
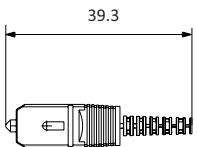
Unique features

- meets Telcordia GR-0326-CORE requirements for high-density applications
- very short rigid length for space saving installations
- colored connector boots for easy identification of product variants
- Pigtail-sets with 12 different 0.9mm tube/fiber colors, optionally dashed for 24-fiber sets



Specifications

SC Connector compliance	IEC 61754-4, TIA 604-3, RoHS
Alignment technology	Full ceramic ferrule (Zirconia ZrO ₂)
Operating temperature	-40°C to +85°C
Flammability	UL94 V-0
Durability	> 1000 mating cycles
Transmission with applied tensile load	GR-0326-CORE 4.4.3.5
Optical performance, insertion loss	Singlemode: ≤ 0.30dB Multimode: ≤ 0.25dB Multimode low-loss: ≤ 0.15dB
Optical performance, return loss	Singlemode UPC: ≥ 50dB Singlemode APC: ≥ 65dB Multimode: ≥ 35dB
Cable types	0.9mm easy-strip (12 colors + 12 colors dashed) 0.9mm tight-tube
Connector end face geometry	IEC 61755-3



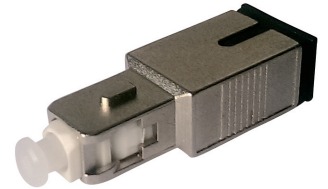
Data Sheet s4u[®] SC/SM Plug Attenuator

Numerous applications

Passive Optical Networks, WDM systems, optical receivers

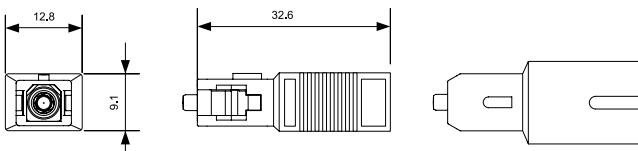
Unique features

- push-pull type
- high stability and reliability
- wavelength independent
- SC interface according to IEC 61754-4



Specifications

Operation wavelength	1260 to 1625nm
Return loss	≥ 55dB (UPC)
	≥ 65dB (APC)
Attenuation tolerance	±0.5 dB for 1 to 5dB attenuation
	±10% for 6 to 30dB attenuation
Polarization dependent loss	≤ 0.2dB
Maximum optical input power	200mW
Operating temperature range	-40 to +80°C
Durability	1000 mating cycles



Order information

Order code	Description	Color	Packing
AT-SCA-XX	SC APC attenuator xx dB (attenuation 1-20dB in 1dB steps)	metal	1
AT-SCU-XX	SC UPC attenuator xx dB (attenuation 1-20dB in 1dB steps)	metal	1