

ELINE® FLOOR DISTRIBUTION BOX PBI / PBIC



The Eline® PBI is an indoor distribution box for FTTH networks. Thanks to its scalable fiber management system, this intermediate point allows to connect up to 12 subscribers.

The optimization of coiling with an innovative cable path for low bending radius fiber installation (G.657A2) allows a straight forward and quick turn-up. Indeed, PBI has coiling areas for managing independently the spliced fibers and waiting tubes. The 250 µm fibers are stored in the front splicing trays.

The PBI can be installed either inside the riser cable conduits or on a wall next to the cable protection raceways.



Weight: 0.6 kg



Dimensions: L 205mm x D 136mm x H 55mm



Packaging dimensions: L 210mm x D 160mm x H 70mm

FEATURES

- Easy and quick installation
- Allows the management of micro-module or 900 µm up to the tray entrance
- Symmetrical design, enabling opening and use in both sides
- Suitable for installation in technical duct or raceways.

AVAILABLE VERSION



PBI

PBI is designed to splice drop cables on the riser cable.



PBIC

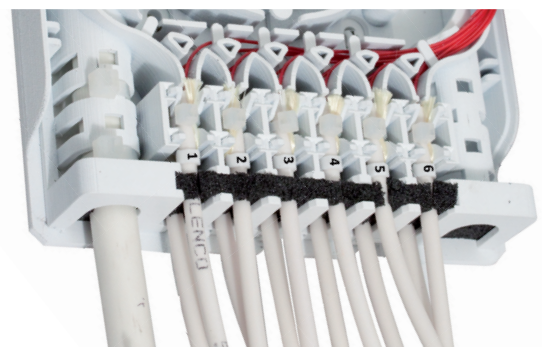
PBIC is equipped with adapters and allows direct connection of a connectorized CTB, without any splice.

Cable entry selection - left or right



or

User-friendly subscriber cable management system



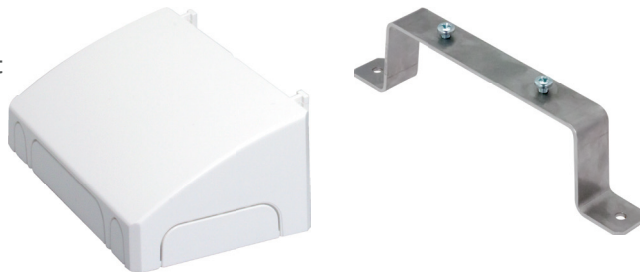
TECHNICAL SPECIFICATIONS

- Fiber bending radius: ≥ 15 mm
- Tensile strength :
 - Customer cable: ≥ 10 daN
 - Riser cable: ≥ 30 daN
- Water & dust proof: IP40
- Shock proof: IK07
- UV protected
- Fire resistance: UL94 V0
- Material: ABS-PC
- Color: RAL 9010
- Capacity:

NUMBER OF CUSTOMERS	RISER CABLE STRUCTURE	FIBER PER CUSTOMER	NUMBER OF SPLICES
12	Modulo 6 ou 12	1 or 2	12 or 24
8	Modulo 4	4	32

OPTIONAL ACCESSORIES

- Cable entries cover
- Metal mounting bracket



ORDERING GUIDE

CODE	DESIGNATION	UNIT
09178	PBI Eline®	unit
09285	PBIC Eline®	unit
09286	PBIC Eline® with 12 SC/APC adapters	unit
09287	PBIC Eline® with 12 SC/APC adapters and pigtails	unit
09576	PBI/PBIC cover	10
09522	PBI/PBIC mounting bracket	10