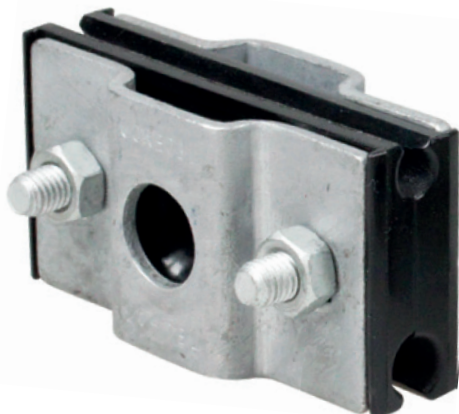


# SUSPENSION CLAMP FOR FIG-8 OPTICAL CABLE SC39B



The SC39B clamp is used for the suspension of aerial figure-8 cables of aerial figure-8 duct structures at intermediate poles on access networks where spans do not exceed 70m.

This clamp can be installed on pole with a 30/41 or 30/41C plate, a 1/13 bolt and a 20mm steel band. It can also be installed under a cross-arm with a plate 5/39 and 1/13.

The SC39B clamp is made with UV resistant thermoplastic jaws reinforced with two galvanized steel plates and secured by two galvanized steel bolts.

PN	MODEL	Ø WIRE	WEIGHT	PACKG
5708	SC39B	3-9mm	0.24kg	50

## FEATURES

- The SC39B clamp has 2 grooves to cover messenger sizes from 3 to 9 mm (Ø over the outer sheath).
- It can be installed on wooden poles with a securing bolt and on all other poles with a pole banding fixing kit.
- The screws can be easily and quickly tightened with a 13 mm standard 6-point spanner.
- The plastic jaws act as a fuse to limit damage on the cable in case of vertical overload and provide a 4 kV dielectric insulation between the cable messenger and the pole.
- The straight grooves allow the suspension of stiff figure-8 cables with FRP messengers.

## INSTALLATION

- When the line is at an angle of less than 25°.
- When the cable is passing through intermediate poles up to 4 consecutive poles.
- In case of balanced adjacent spans.

**NOTE: It is mandatory to install a double anchorage instead of a suspension in the following cases:**

- On end poles.
- When the line is at an angle greater than 25° (instead of a suspension device), in order to preserve the integrity of the cable over time.
- If road crossing (obligatory cable stop on each pole both sides of the road).
- In case of unbalanced adjacent spans (a span of 40m, followed by a span of 30m, for example).
- In alignment every 5 poles (if using suspension clamps on intermediate poles).