

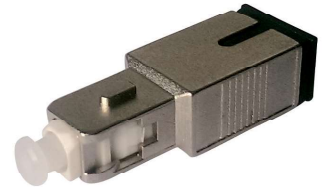
Data Sheet s4u® SC/SM Plug Attenuator

Numerous applications

Passive Optical Networks, WDM systems, optical receivers

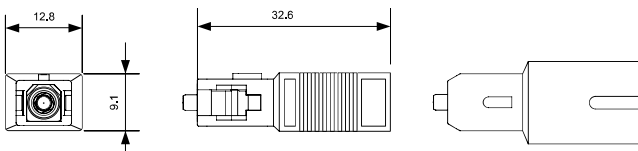
Unique features

- push-pull type
- high stability and reliability
- wavelength independent
- SC interface according to IEC 61754-4



Specifications

Operation wavelength	1260 to 1625nm
Return loss	≥ 55dB (UPC)
	≥ 65dB (APC)
Attenuation tolerance	±0.5 dB for 1 to 5dB attenuation
	±10% for 6 to 30dB attenuation
Polarization dependent loss	≤ 0.2dB
Maximum optical input power	200mW
Operating temperature range	-40 to +80°C
Durability	1000 mating cycles



Order information

Order code	Description	Color	Packing
ATT-SCA-XX	SC APC attenuator xx dB (attenuation 1-20dB in 1dB steps)	metal	1
ATT-SCU-XX	SC UPC attenuator xx dB (attenuation 1-20dB in 1dB steps)	metal	1