

# Brackets MALICO

## / Double crossarm bracket **SEM CU FO**

### Convenient

Time saving less straps  
and wood screw to  
install



### Economical solution

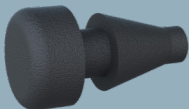
## / Universal crossarm **SEMT8**



### Compact



*These new products are also  
compatible with composite  
poles thanks to the optional  
PPC pads*



**MALICO**  
450 rue Jacquard - Z.I. La Madeleine - BP 3127 - 27031 Evreux Cedex - France  
Tel. : 02 32 23 35 60 - Fax : 02 32 23 33 99  
contact@malico-telecom.com

[www.malico-telecom.com](http://www.malico-telecom.com)



Plaque SEMCUFO\_SEMT8\_FET\_202309\_GB\_V1 Non-contractual document and photos

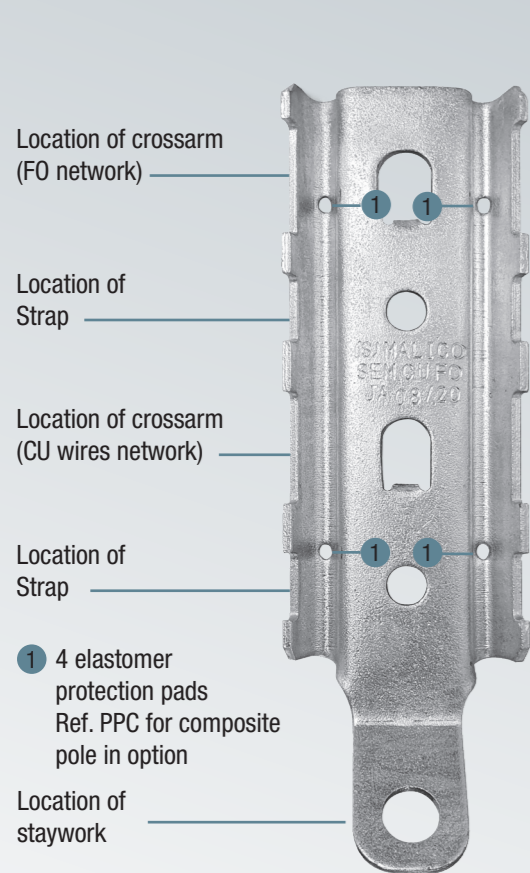
## Brackets for Telecom poles



**MALICO®**

# SEM CU FO

## Double crossarm bracket



### / Versatile and universal

Only one crossarm allows to setup up to 2 crossarms on wood, steel or composite telecom pole. Optional protection pads PPC. Staywire anchoring tongue.

### / Economical and quick solution

Replaces the setup of 2 crossarm bracket fittings or 2 brackets. Fixed spacing of 100 mm between the crossarms.

### / Facilitates the deployment of your aerial telecom networks !



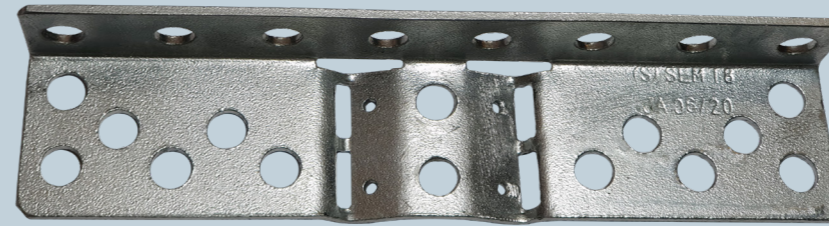
On steel or composite post, assembly by two BH 14x25/25 bolts and fasten with only two bands of strap.



On a wooden pole, two through bolts are sufficient for assembly and fasten.

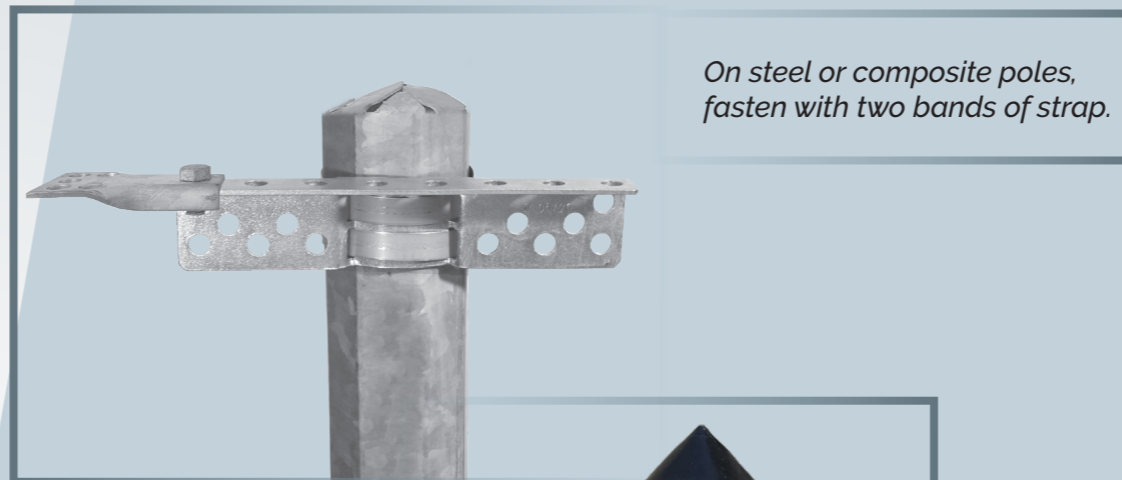
# SEMT8

## Bracket-crossarm



/ **Compact** crossarm with 8 holes on the horizontal front, suitable for rural areas .

/ **Economical and quick solution** to be fasten on any wood, steel or composite telecom poles.



On steel or composite poles, fasten with two bands of strap.



On a wooden post, fasten by a through bolt and a wood screw.

# PPC

## The smart pad



The double crossarm bracket SEM CU FO and the bracket SEMT8 have been designed for a fasten on composite poles.

The fixing of 4 elastomer pads PPC in the dedicated holes 1 ensure the protection of the composite poles and an anti-rotation support for the bracket.

# FET

## Drop anchoring hardware



/ **NEW** model allowing to fit up 5 cable drop dead-end clamps instead of 4.

/ To be fasten at the end of a crossarm width 40 mm with one bolt BH 14X25/25.